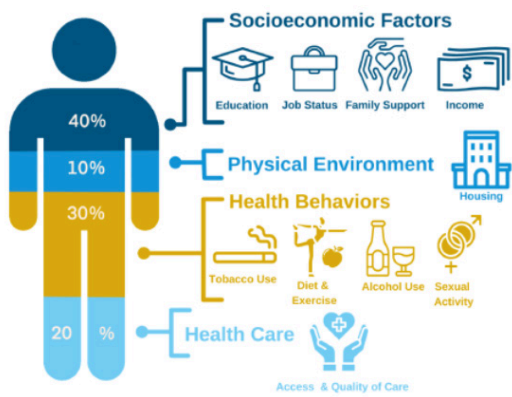


SOUTH FLORIDA ANCHOR ALLIANCE

CREATING THE EQUITY WE SEEK, TOGETHER

→ THE CONNECTION

Inequities in employment and household wealth creation influence individual health outcomes



Studies show that 40% of an individual's health is determined by socio-economic factors such as education, occupation, or income. 30% is determined by health behaviors such as diet, exercise, or substance use. 10% is determined by one's physical environment, such as their community, house, or workplace.

Source: Institute for Clinical Systems Improvement, Going Beyond Clinical Walls: Solving Complex Problems (October 2014)

→ THE ENVIRONMENT

The ability to pay for basic needs affects most households in South Florida and racial disparities impact economic progress



Median wealth for white households was estimated at **\$107,000**. South Americans and U.S. blacks had a fraction of the wealth of white households, at **\$1,200** and **\$3,700**, respectively. (2)

Note: ALICE (Asset Limited, Income Constrained, Employed) - households with income above the Federal Poverty Level (FPL) but below the basic cost of living. This means that households may not earn enough to cover basic living expenses, even though they are employed.

(1) United Way "ALICE in Broward County, Point-in-Time Data," 2023
(2) The Color of Wealth in Miami (2019) report

→ THE CHALLENGE

Local, small, minority-owned businesses do not benefit from procurement opportunities



- More than one in three Miami-Dade business owners is Black, Hispanic, or a woman.¹
- Over 90% of businesses in Broward County are Small Businesses as defined by federal standards.²
- Small businesses* are the backbone of Florida's economy, creating three out of every four new jobs in the state.¹
- Small businesses* employing more than 40 percent of the state's private sector workforce.¹
- A 9% increase in small business jobs would effectively stem unemployment in the city's distressed neighborhoods.³
- Miami- Dade County has an Annual Procurement Spend target of 10% with certified Local /Small Business and Broward County has an annual procurement spend target of at least 25%.⁴

(1) Greater Miami Chamber of Commerce, (2) Broward County OESBD, (3) Entrepreneurs of Color Fund; LISC, (4) Miami Dade County Office of Small Business Development

→ THE OPPORTUNITY

Assemble community partners to create an inclusive local economy with OPPORTUNITY and MOBILITY for all individuals and small businesses

HIRING AND WORKFORCE DEVELOPMENT



192,500
EMPLOYEES

LEVELING INEQUITIES THROUGH LOCAL HIRING

- Building an inclusive, local hiring pipeline
- Preparing residents for high-demand jobs
- Creating career pathways
- Reducing recruitment expenses
- Increasing wages for South Floridians

INCLUSIVE, LOCAL PURCHASING



10+ BILLION
GOODS & SERVICES

BUILDING CAPABILITIES BY CREATING CONNECTIONS

- Creating a thriving local business community
- Reducing barriers for local and diverse vendors
- Creating a more efficient & resilient supply chains
- Building capacity of vendors to compete for contracts
- Increasing contracting opportunities

→ OUR RESPONSE

Build an alliance that collectively and intentionally uses its assets to build community wealth

MEMBERS

PARTNERING | ALIGNING



PARTNERS

BUILDING | GROWING



SUPPORTERS

INVESTING | ENGAGING



• SYSTEMS-LEVEL THINKING • UNPRECEDENTED CAPITAL INFUSION • FOSTERING PARTNERSHIPS • CREATIVE PROBLEM SOLVING • BEST PRACTICE SHARING • POWER OF THE COLLECTIVE • IMPACT AT SCALE •

